

# ACOMA TOWNSHIP

Each township has six files containing six sections in each, and one file containing all 36 sections.

Acoma01to06.pdf  
Acoma07to12.pdf  
Acoma13to18.pdf  
Acoma19to24.pdf  
Acoma25to30.pdf  
Acoma31to36.pdf  
AcomaAll36.pdf

The points are listed starting with the point above the SE corner and continuing in a counter-clockwise rotation around the section. This normally begins with the East point, Northeast, then North, but may also include Witness Corners, and/or Meander Corners.

## **Definitions**

**Witness Corner:** A witness corner “stands in” when the true corner cannot be monumented or occupied because of difficult terrain or obstruction of the corner sight. The witness corner must be on the section line and is usually 5 or 10 chains away from the true corner.

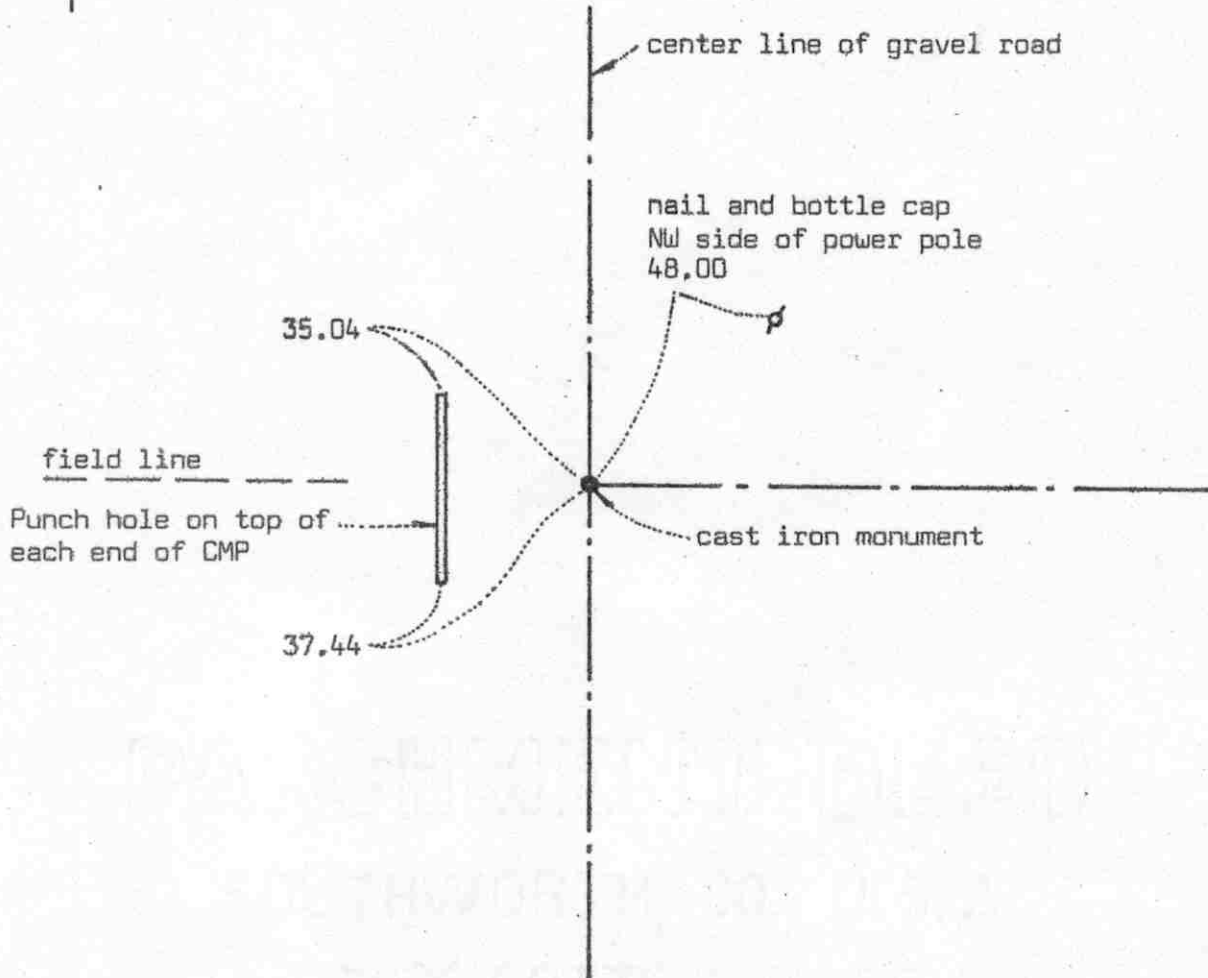
**Meander Corner:** The intersection of a township, range, or section line and the banks of a navigable stream or meandering body of water.

EAST QUARTER corner, Section 19, Township 117 North, Range 30 West

# Certificate of Location of Government Corner



## SKETCH OF REFERENCE TIES (NO SCALE)



Statement of evidence relative to this corner location on sheet 2

I hereby certify that this document was prepared by me or under my direct supervision.

Willard Pellinen

Willard Pellinen  
McLeod County Surveyor  
License No. 9626

Date 3/20/89

OFFICE OF THE COUNTY RECORDER  
MCLEOD COUNTY, MINNESOTA.

I hereby certify that this document was filed in this office at 2 o'clock P.M. on the 30th day of March, 19 89.

Carmer Pottier, County Recorder

By \_\_\_\_\_, Deputy

Document No. 227481

## *Certificate of Location of Government Corner*

This corner was originally established by D.L.Langton of the Government Land Office in 1856. He "set quarter section post, drove charred stake, raised mound of earth and planted locust seeds at corners of the trench as per instructions".

We could find no old resurvey information in the County records.

On September 13, 1978, we dug for the corner at the center line intersection of roads north, south and east. Down  $1\frac{1}{2}$  feet below the road surface we found a 2 inch diameter iron pipe. We took reference ties and replace the pipe with a McLeod County cast iron monument. This was within  $3\frac{1}{2}$  feet of being on a split between the section corners.

On June 14, 1988, we found the cast iron monument in good condition and the reference ties good.

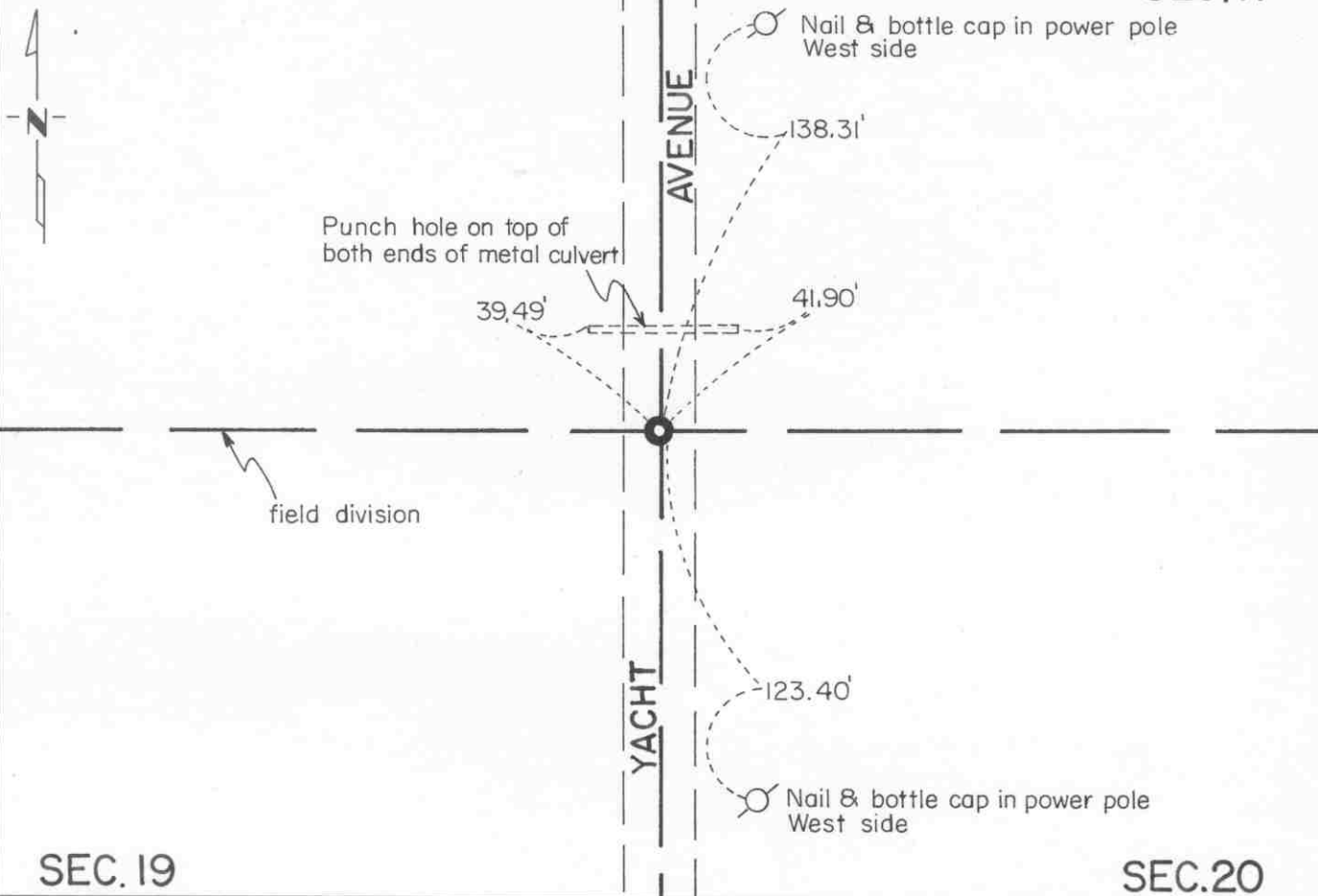
We don't know who set the iron pipe, but we accept it as being at the correct location of the east quarter corner of Section 19.

**CERTIFICATE OF LOCATION OF GOVERNMENT CORNER**Northeast Corner of Section 19, Township 117 N, Range 30 W, 5 th P.M.STATE OF MINNESOTA, County of McLeod

At the corner location shown on the sketch:

☒ On May 14, 1995<sup>3</sup> found a cast iron monument about 7" below road surface  
DATE☒ left monument as found, ☐ lowered monument, ☐ removed monument (explain)☐ On \_\_\_\_\_ placed a \_\_\_\_\_  
DATE**SEC. 18**

SKETCH OF REFERENCE TIES

**SEC. 17****SEC. 19****SEC. 20**

Statement of evidence relative to this corner location is on back of page.

I hereby certify that this document and the data contained herein was prepared by me or under my direct supervision.

Robert C. Jones  
SIGNATURENov. 28, 1995  
DATERegistration No. 11865☒ Land Surveyor, ☐ Professional Engineer☐ County Surveyor, ☐ County Engineer

OFFICE OF THE COUNTY RECORDER

County of McLeodI hereby certify that this document was filed in the Co. Recorders office at 9 A. .M. on the 29th day of November A.D., 1995County Recorder Carmen Poth's MulderBy Phyllis Sapkowski, DeputyDOCUMENT NO. 269552

Statement of Evidence:

Northeast Corner of Section 19, T 117 N, R 30 W

- 1856 - The original Public Land Survey was completed by Denis S. Langton. He drove a charred stake, raised a dirt mound, and planted locust seed at the corner as per the instructions.
  
- 1899 - E. L. Higgins, McLeod County Surveyor, did work in Section 18. He did not show in his notes whether he found or set anything at this corner. He shows the distance to the east quarter corner of Section 18 to be 2637 ft. Dimensions in other parts of this survey indicate that the distance from the north quarter corner to the northeast corner of Section 19 could have been 2686 ft.
  
- 1978 - Willard Pellinen, McLeod County Surveyor, dug at the centerline of a north/south road and in line with a field division to the west. He found a steel shaft about 3 ft. below the road surface. He interviewed Mr. Otto Horrmann, 78 years old, who had lived in the southeast quarter of Section 18 for 48 years. He stated that the steel shaft was the correct corner. A cast iron monument was set over the steel shaft and reference ties were set.
  
- 1989 - Willard Pellinen recovered the cast iron monument.
  
- 1993 - A Mn/DOT survey crew, headed by Gene East, recovered the cast iron monument about 7" below the road surface. He checked the reference ties set in 1978.

The cast iron monument is accepted as the corner location because it fits long standing occupation lines; that is, the centerline of a north/south road and a field division to the west. It fits Higgins' distance to the east quarter corner of Section 18 within 1 foot and the extrapolated distance derived from Higgins' survey to the north quarter corner of Section 19 within 2.1 feet.

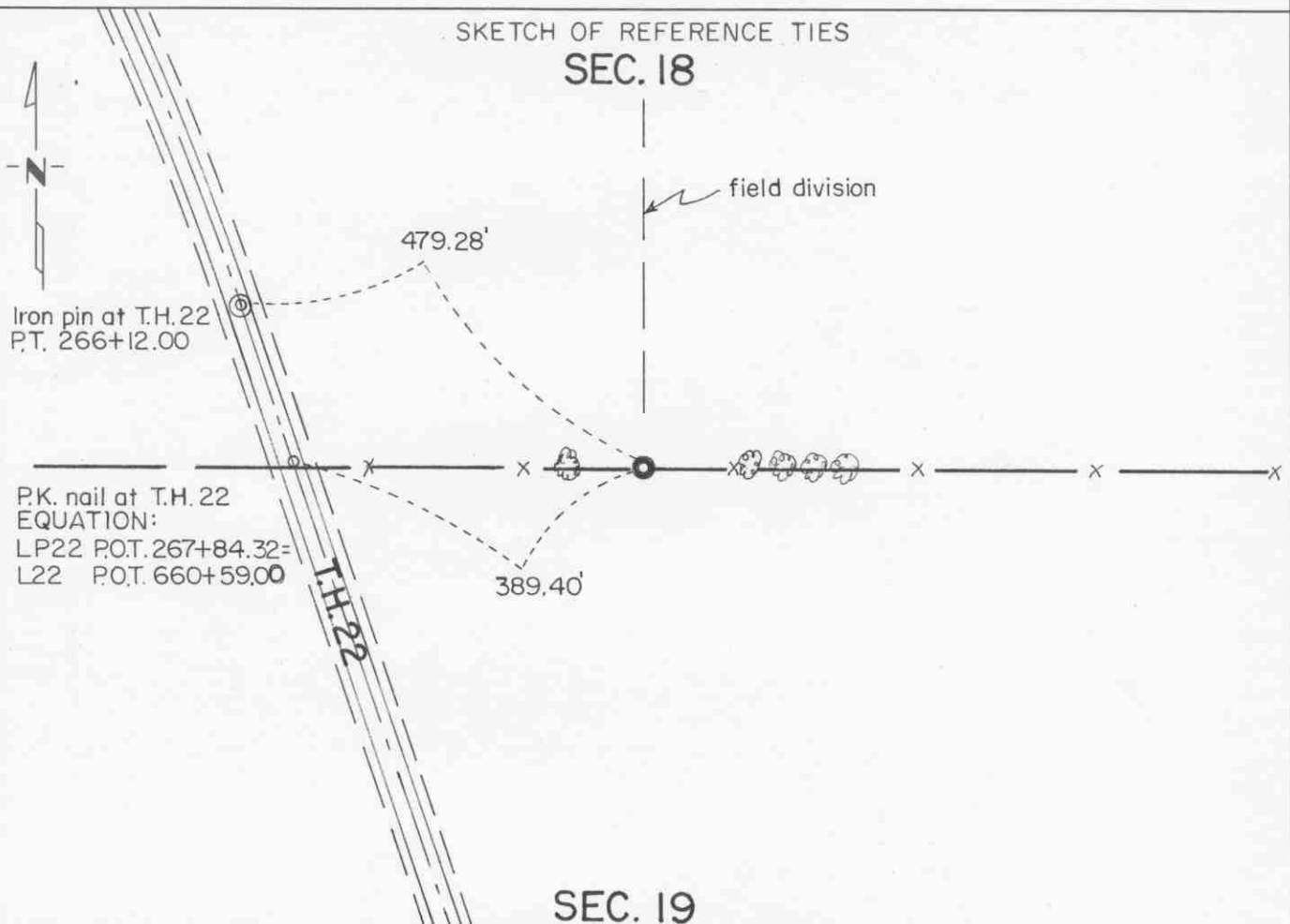
For additional information, contact the Mn/DOT Surveys Section at Willmar, Mn 56201.

# CERTIFICATE OF LOCATION OF GOVERNMENT CORNER

North Quarter \_\_\_\_\_ Corner of Section 19, Township 117 N, Range 30 W, 5th P.M.  
 STATE OF MINNESOTA, County of McLeod

At the corner location shown on the sketch:

- ☒ On May 14, 1993 found a cast iron monument near surface  
DATE
- ☒ left monument as found, ☐ lowered monument, ☐ removed monument (explain)
- ☐ On \_\_\_\_\_ placed a \_\_\_\_\_  
DATE



Statement of evidence relative to this corner location is on back of page.

I hereby certify that this document and the data contained herein was prepared by me or under my direct supervision.

Robert J. Gaus Nov. 20, 1995  
SIGNATURE DATE

Registration No. 11864

- ☒ Land Surveyor, ☐ Professional Engineer  
☐ County Surveyor, ☐ County Engineer

## OFFICE OF THE COUNTY RECORDER

County of McLeod

I hereby certify that this document was filed in the Co. Recorders office at 9 A. M. on the 29th day of November A.D., 1995

County Recorder Carmen Ostlie Mulder

By Phyllis Jopkowsk, Deputy

DOCUMENT NO. 269553

Statement of Evidence:

North Quarter Corner Section 19, T 117 N, R 30 W

- 1856 - The original Public Land Survey was completed by Denis S. Langton. He drove a charred stake, raised a dirt mound, and planted locust seeds at the corner as per the instructions.
- 1899 - E. L. Higgins, McLeod County Surveyor, did work in Section 18. He shows that the north quarter corner of Section 19 is 2644.5 ft. south of the center of Section 18. One could conclude that the distance from the north quarter corner of Section 19 to the northwest corner was 2740 ft. according to his dimensions in other parts of Section 18. He did not show whether a monument was found at the quarter corner and he apparently did not set one.
- 1944 - The Minnesota Highway Department right of way map shows the corner to be at the intersection of an east/west fence line and a fence line to the north. It was located 389.4 ft. easterly (as measured along the east/west fence line) from T.H. 22 centerline P.O.T. 660+66.7.
- 1982 - Willard Pellinen, McLeod County Surveyor, interviewed Mr. Raymond Schmeling, 53 years old, who has lived in the north half of Section 19 all his life. He stated that the fence is in the same location as long as he can remember. His grandfather homesteaded the farm.

The highway alignment was recovered and the corner was set according to the information shown on the right of way map. A cast iron monument was set to mark the corner. It was located on the east/west fence line and in line with a field division to the north.

- 1993 - A Mn/DOT survey crew, headed by Gene East, recovered the cast iron monument along the east/west fence line. It was tied into the McLeod County Coordinate System.

The cast iron monument is located 389.64 ft. easterly, as measured along the north line of Section 19, of T.H. 22 P.O.T. 660+67.09. It is also located 22.18 ft. east and 3.67 ft. north of the lost location.

The cast iron monument is accepted as the corner location because it fits long standing occupation lines, it very nearly fits the location shown on the right of way map, it fits Higgins' distance from the center of Section 18 within 4 ft., and the distance to the northwest corner of the section appears to fit an extrapolation of Higgins' survey within 0.2 ft.

For additional information, contact the Mn/DOT Surveys Section at Willmar, Mn 56201.

**CERTIFICATE OF LOCATION OF GOVERNMENT CORNER**Northwest Corner of Section 19, Township 117 N, Range 30 W, 5th P.M.STATE OF MINNESOTA, County of McLeod

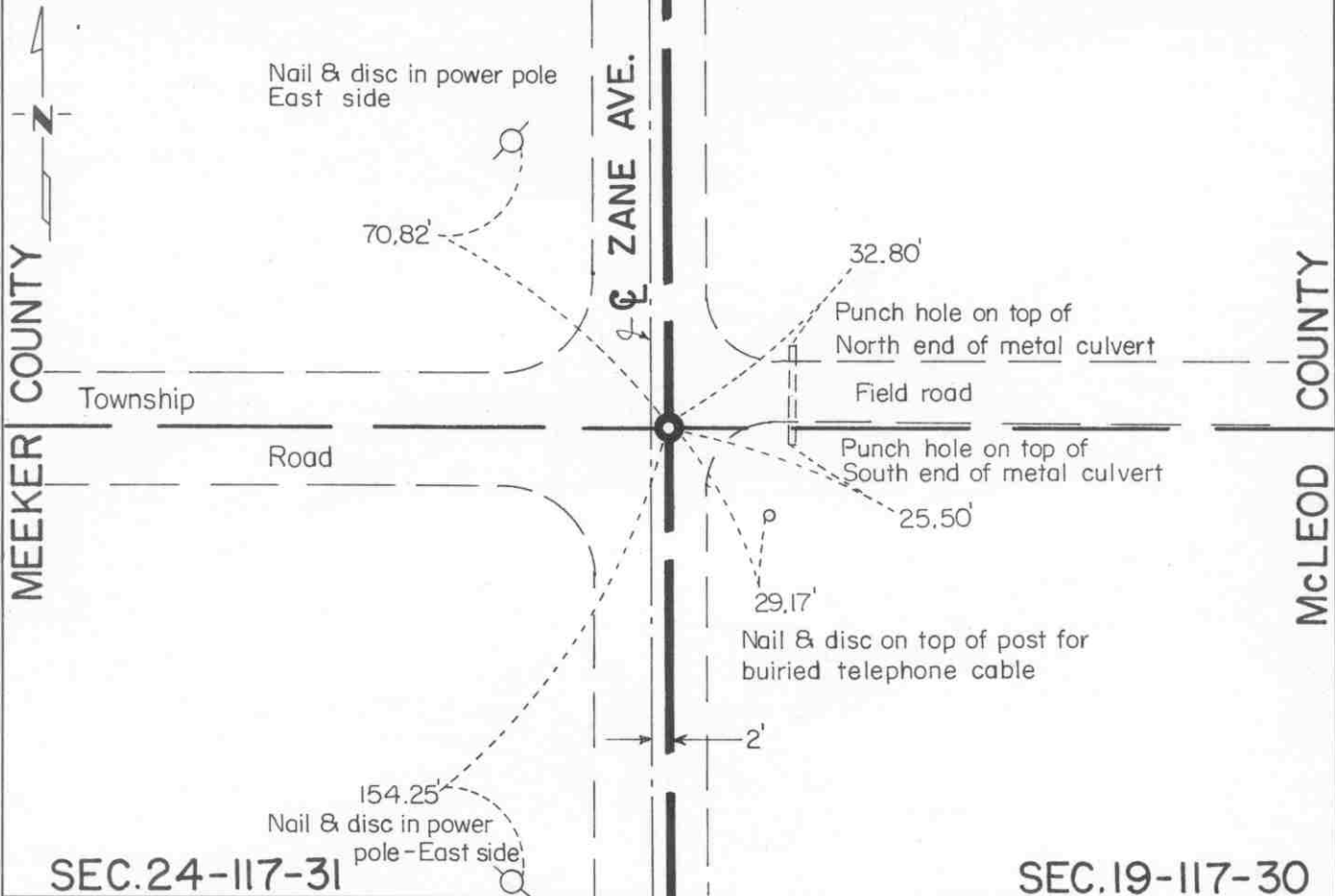
At the corner location shown on the sketch:

☒ On May 14, 1993  
DATE found a cast iron monument about 9" below the road surface☒ left monument as found, ☐ lowered monument, ☐ removed monument (explain)☐ On \_\_\_\_\_  
DATE placed a \_\_\_\_\_

SEC. 13-117-31

SKETCH OF REFERENCE TIES

SEC. 18-117-30



SEC. 24-117-31

SEC. 19-117-30

Statement of evidence relative to this corner location is on back of page.

I hereby certify that this document and the data contained herein was prepared by me or under my direct supervision.

Robert J. Gans  
SIGNATURENov. 20, 1995  
DATERegistration No. 11864☒ Land Surveyor, ☐ Professional Engineer☐ County Surveyor, ☐ County Engineer

OFFICE OF THE COUNTY RECORDER

County of McLeodI hereby certify that this document was filed in the Co. Recorders office at 9 A. .M. on the 29th day of November A.D., 1995County Recorder Carmen Cathie MulderBy Phyllis Sopkowiak, DeputyDOCUMENT NO. 269554



Statement of Evidence:

Northwest Corner Section 19, T 117 N, R 30 W

- 1855 - The survey of the township line between Range 30 West and Range 31 West was completed by John Ryan. A wood post was set to mark the corner, a trench was dug as per instructions, and reference was made to two bearing trees.
- 1899 - E. L. Higgins, McLeod County Surveyor, found a stone at the corner.
- 1892 & 1905 - N. Y. Taylor, Meeker County Surveyor, shows a 3" by 10" by 18" limestone at this corner.
- 1972 - The Meeker County Engineer found a 1" diameter iron pipe 24" below the road surface with a piece of rotted wooden stake above and into the pipe.
- 1973 - John Kruse, 46 years old, who is a local resident since 1945 didn't know what marked the corner but has accepted the centerline intersection of roads north, south, and west as the corner location.  
  
Willard Pellinen, McLeod County Surveyor, hired John Tupa from Hutchinson to dig for the corner with a backhoe. A 1" diameter iron pipe was found 2 ft. below the road surface. A 3" by 10" by 18" limestone was next to the pipe. Later in the year a cast iron monument was set over the iron pipe and reference ties were set.
- 1979 - A Mn/DOT survey crew, headed by Allan Bolter, recovered the cast iron monument.
- 1980 - John W. Drake Jr., Registered Land Surveyor with Mn/DOT, filed a Certificate of Location of Government Corner (Document No. 196666) with the Meeker County Recorder on July 31.
- 1989 - Willard Pellinen recovered the cast iron monument.
- 1993 - A Mn/DOT survey crew, headed by Gene East, recovered the cast iron monument about 9" below the road surface and checked the reference ties set in 1980.

The cast iron monument is accepted as the corner location because there is nearly a continuous chain of record evidence indicating that it perpetuates the location of the original corner. It perpetuates a location accepted as the corner for at least 103 years.

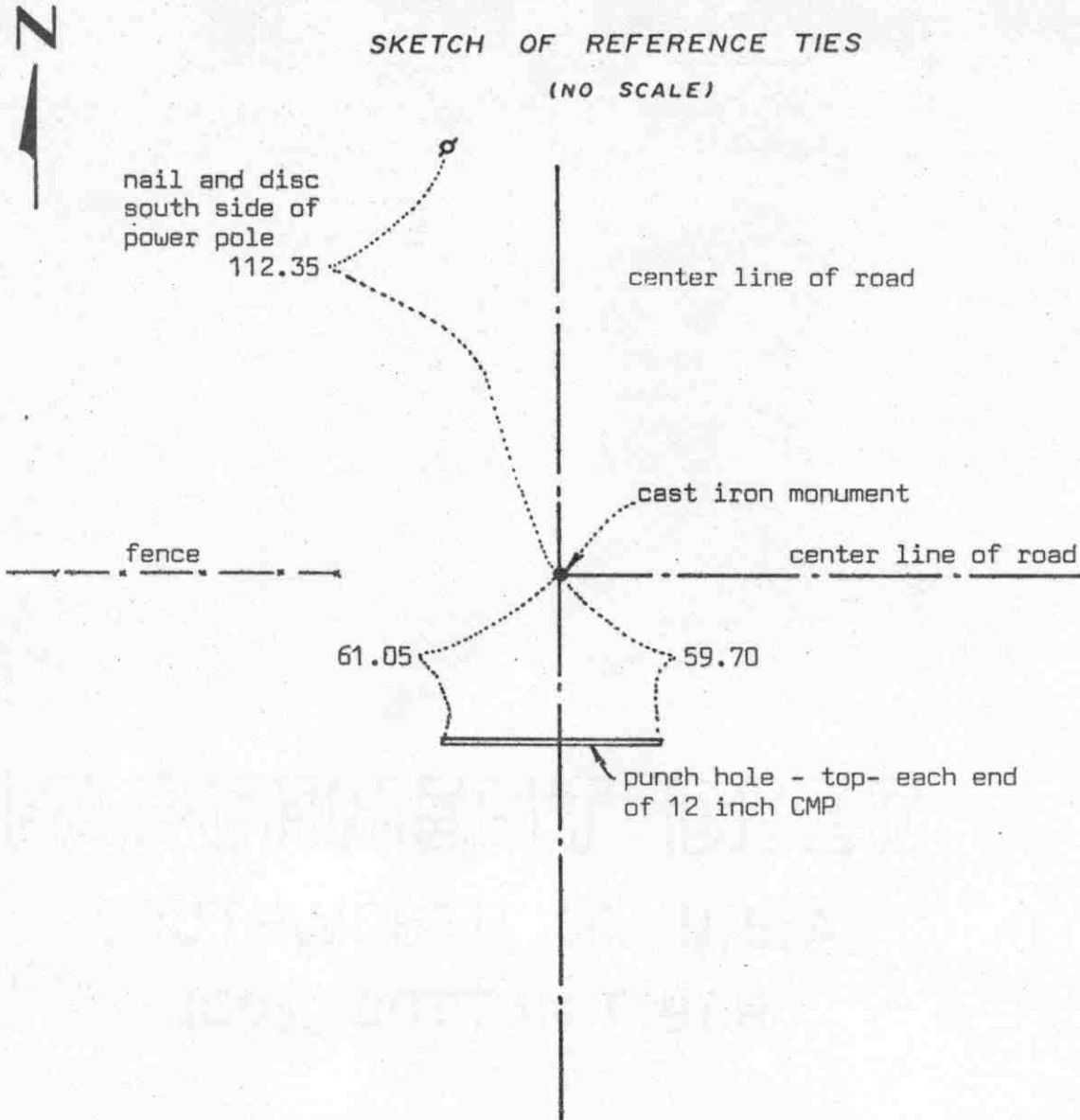
For additional information, contact the Mn/DOT Surveys Section at Willmar, Mn 56201.

WEST QUARTER corner, Section 19, Township 117 North, Range 30 West

## Certificate of Location of Government Corner

## SKETCH OF REFERENCE TIES

(NO SCALE)

Statement of evidence relative to this corner location on sheet 2

I hereby certify that this document  
was prepared by me or under my  
direct supervision.

Willard Pellinen

Willard Pellinen  
McLeod County Surveyor  
License No. 9626

Date 2/14/89

OFFICE OF THE COUNTY RECORDER  
MCLEOD COUNTY, MINNESOTA.

I hereby certify that this document was filed in this  
office at 9 o'clock A.M. on the 15th day  
of Feb. 19 89.

Carmen Dotlie, County Recorder

By \_\_\_\_\_, Deputy

Document No. 226963

WEST QUARTER corner, Section 19, Township 117 North, Range 30 West

## Certificate of Location of Government Corner

This corner was established in 1855 by John Ryan of the Government Land Office. He set post, in marsh, as per instructions with a deposit of charcoal.

We found no record of the location of this corner in the County files.

On January 3, 1973, we chained the west line of Section 19 and set a temporary west quarter corner on the center line of the road in line with a fence running west. On July 23, 1973 we dug for the corner, John Tupa from Hutchinson with a backhoe. We found a wood post, 3 feet lone, top of post down  $4\frac{1}{2}$  feet below the road surface. This post was at the center line intersection of the roads running north, south and east and on line with a fence running west. It was also within  $4\frac{1}{2}$  feet of being on a split between section corners.

On August 17, 1973, we set a McLeod County cast iron monument at the corner and took reference ties.

We feel the wood post we found in 1973, has perpetuated the true location of the west quarter corner of Section 19.

On June 6, 1988, we found the cast iron monument in good condition and the reference ties good.

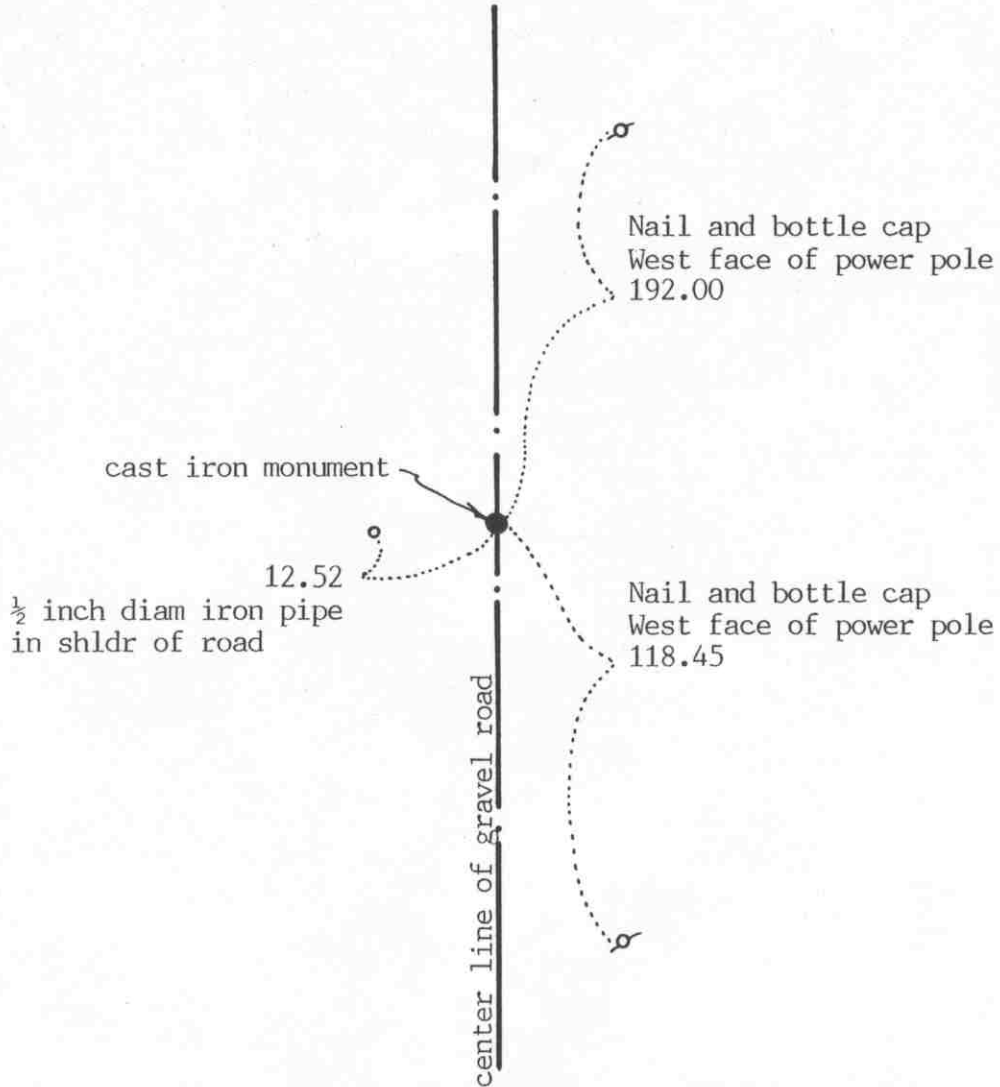
EAST QUARTER corner, Section 20, Township 117 North, Range 30 West

# Certificate of Location of Government Corner

## SKETCH OF REFERENCE TIES (NO SCALE)

SECTION 20

SECTION 21



Statement of evidence relative to this corner location on sheet 2

I hereby certify that this document  
was prepared by me or under my  
direct supervision.

Willard Pellinen

Willard Pellinen  
McLeod County Surveyor  
License No. 9626

Date Nov. 13, 1992

OFFICE OF THE COUNTY RECORDER  
MCLEOD COUNTY, MINNESOTA.

I hereby certify that this document was filed in this  
office at 3 o'clock P.M. on the 17th day  
of November, 1992.

Carmen Ottilie Mulder, County Recorder

By \_\_\_\_\_, Deputy

Document No. 248905

EAST QUARTER        corner, Section 20, Township 117 North, Range 30 West*Certificate of Location of Government Corner*

1856. E.L.Langton of the General Land Office originally established this corner. He set a post and marked an 8 inch and a seven inch aspen for bearing trees.

There are no property lines running east and west from this corner to help position this corner.

September 13, 1978. McCombs Knutson Associates (Dickman Knutson, county surveyor) excavated in the center line of the north-south road half way between the section corners. They found an iron pin down 2.7 feet below the surface of the road. They took available reference ties and set a McLeod County cast iron monument over the found iron pin. This corner is within  $\frac{1}{2}$  foot of being on line and split between the section corners.

December 18, 1987. All the old ties had been destroyed. We found the monument down 4 inches below the road surface and took new reference ties.

November 11, 1992. We found the monument in good condition and checked the reference ties.

The monument set by Knutson is accepted as marking the government corner. It fits the occupation line (the center line of the north-south road) and it perpetuates the location of an older monument.

NORTHEAST corner, Section 20, Township 117 North, Range 30 West

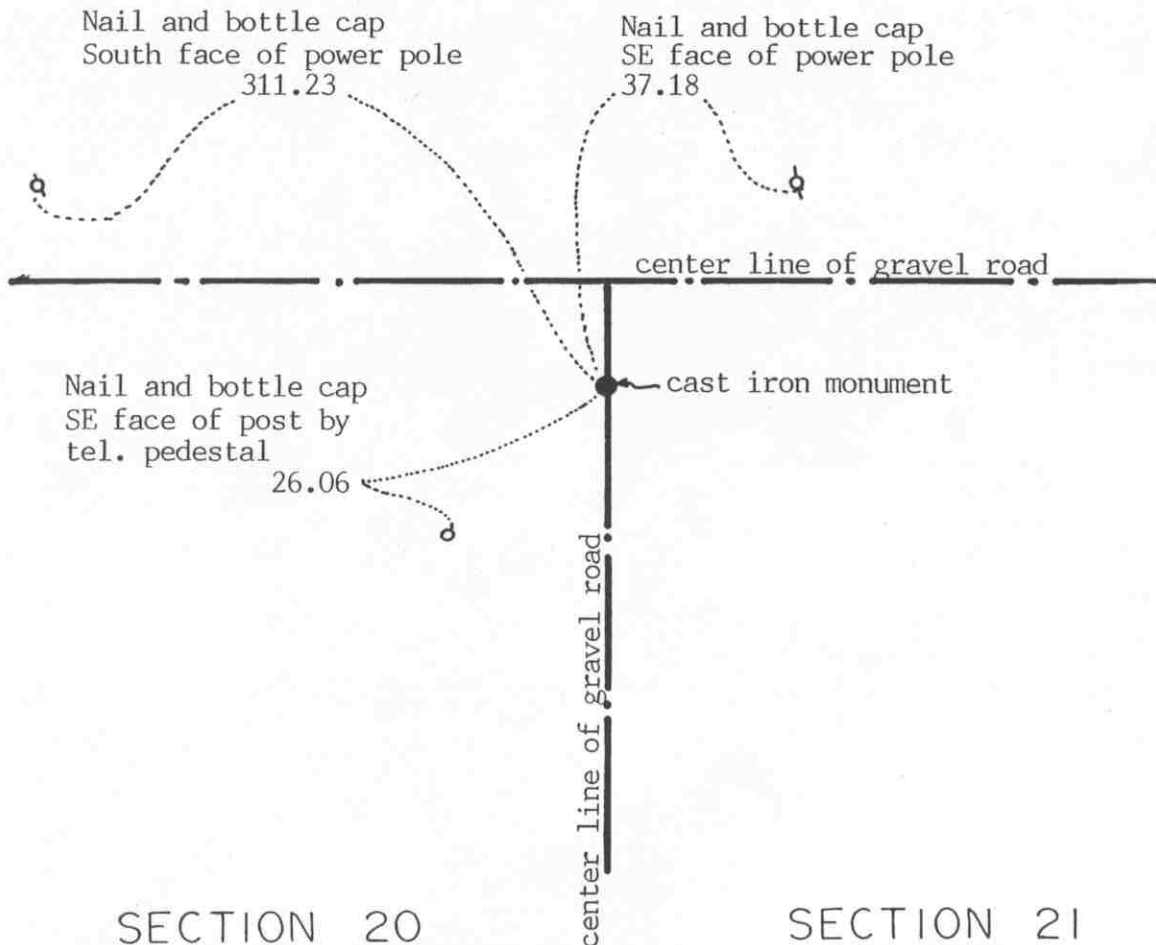
# Certificate of Location of Government Corner

## SKETCH OF REFERENCE TIES

(NO SCALE)

SECTION 17

SECTION 16



Statement of evidence relative to this corner location on sheet 2

I hereby certify that this document was prepared by me or under my direct supervision.

Willard Pellinen

Willard Pellinen  
McLeod County Surveyor  
License No. 9626

Date November 12, 1992

OFFICE OF THE COUNTY RECORDER  
MCLEOD COUNTY, MINNESOTA.

I hereby certify that this document was filed in this office at 3 o'clock P.M. on the 17th day of November, 19 92.

Armen B. Miller, County Recorder

By \_\_\_\_\_, Deputy

Document No. 248304

NORTHEAST corner, Section 20, Township 117 North, Range 30 West

## *Certificate of Location of Government Corner*

1856. E. L. Langton of the General Land Office originally established this corner. He set a post and marked an oak, an elm and 2 aspens for bearing trees.

October 15, 1919. E. L. Higgins, surveyor, found an iron post (old wagon axle) at the corner. He had a distance of 2586.50 feet to the north quarter corner of Section 21.

September 13, 1978. McCombs Knutson Associates (Dickman Knutson, county surveyor) found the axle down  $1\frac{1}{2}$  feet below the surface of the road. They took available reference ties and set a McLeod County cast iron monument over the axle.

June 23, 1982. We found the monument in good condition.

December 18, 1987. We again found the monument. We measured 2585.24 feet to the north quarter corner of Section 21, compared with the 1919 distance of 2586.50 feet.

November 11, 1992. We found the monument in good condition and checked the reference ties.

The monument set by Knutson is accepted as marking the government corner. It perpetuates the location of an older monument (the axle found by Higgins in 1919) and it agrees with the 1919 distance to the north quarter corner of Section 21.



NORTH QUARTER corner, Section 20, Township 117 North, Range 30 West

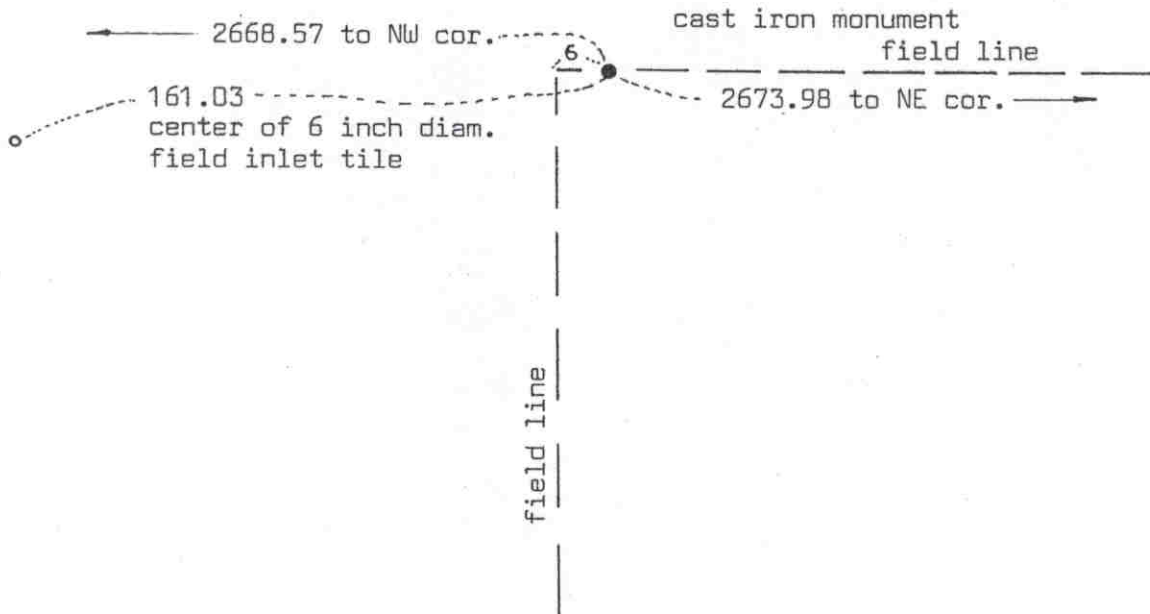
# Certificate of Location of Government Corner

## SKETCH OF REFERENCE TIES

(NO SCALE)



angle on north side of cor.  
= 179°59'01"



Statement of evidence relative to this corner location on sheet 2

I hereby certify that this document was prepared by me or under my direct supervision.

Willard Pellinen

Willard Pellinen  
McLeod County Surveyor  
License No. 9626

Date 7/15/89

OFFICE OF THE COUNTY RECORDER  
MCLEOD COUNTY, MINNESOTA.

I hereby certify that this document was filed in this office at 9 o'clock A.M. on the 18th day of July 1989.

Carmen Ostlie, County Recorder  
By \_\_\_\_\_, Deputy

Document No. 229061



NORTH QUARTER corner, Section 20, Township 117 North, Range 30 West*Certificate of Location of Government Corner*

This corner was originally set by the government in 1856.

D.L.Langton "set quarter section post, drove charred stake, raised mound of earth and planted locust seeds at corners of trench as per instructions."

On September 13, 1978, we found an axle down 10 inches below the surface. Rocks on top of the axle. An old fence running south  $\frac{1}{2}$  way between the found axle and the NE corner of Section 20. This axle falls within 3 feet of being  $\frac{1}{2}$  way between the section corners. We removed the axle and set a McLeod County cast iron monument.

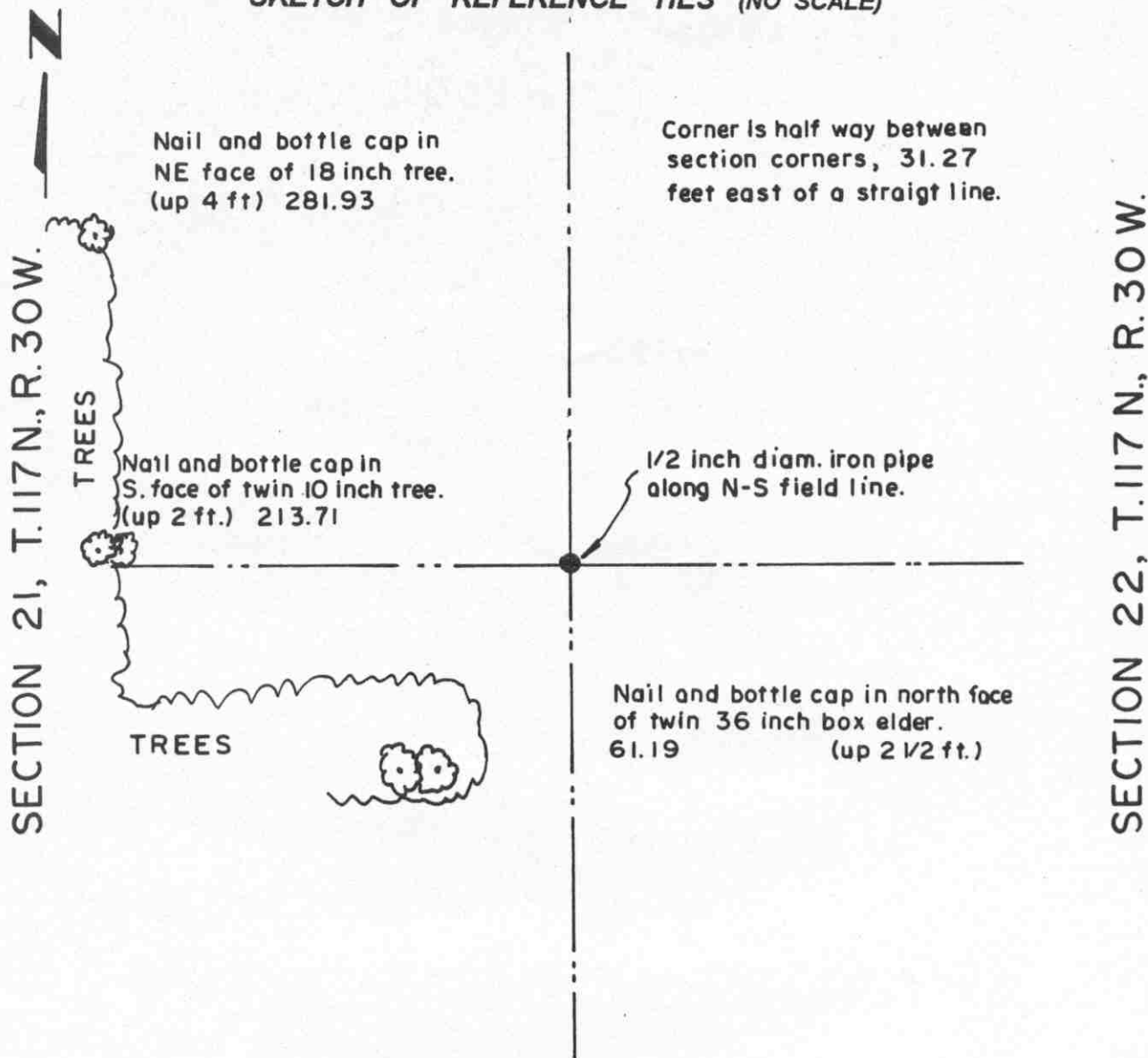
On February 21, 1989, we found the cast iron monument in good condition.

We don't know who or when the axle was set, but there being no evidence to the contrary, we accept this as the correct quarter corner.

# Certificate of Location of Government Corner

East Quarter corner, Section 21, Township 117 North, Range 30 West

## SKETCH OF REFERENCE TIES (NO SCALE)



### Statement of evidence relative to this corner location on sheet 2

I hereby certify that this document was prepared by me or under my direct supervision.

Willard Pellinen

Willard Pellinen  
McLeod County Surveyor  
License No. 9626.

Date Dec 22, 1995

### OFFICE OF THE COUNTY RECORDER MCLEOD COUNTY, MINNESOTA

I hereby certify that this document was filed in this office at 9 o'clock A.M. on the 9th day of January, 19 96.

Carmen Ostlie Mulder, County Recorder

By Charleen Engelman, Deputy.

Document No. 270221

## **Certificate of Location of Government Corner**

**East Quarter corner, Section 21, Township 117 North, Range 30 West**

**1855. D. L. Langton of the General Land Office established this corner. He set a post and marked two aspens for bearing trees.**

**May, 1982. We set a temporary quarter corner along a north-south field line which has been accepted as the section line by adjoining land owners. This was also on the easterly prolongation of a fence to the west. Extending a line from the west quarter corner and a fence along the north line of the Southwest Quarter would place the corner farther north. Also a fence along the north line of the Southeast Quarter of Section 22 extended westerly would place the quarter corner farther north.**

**November, 1995. We set an iron pipe along the north-south field line half way between the northeast and southeast corners of Section 21 and took available ties.**

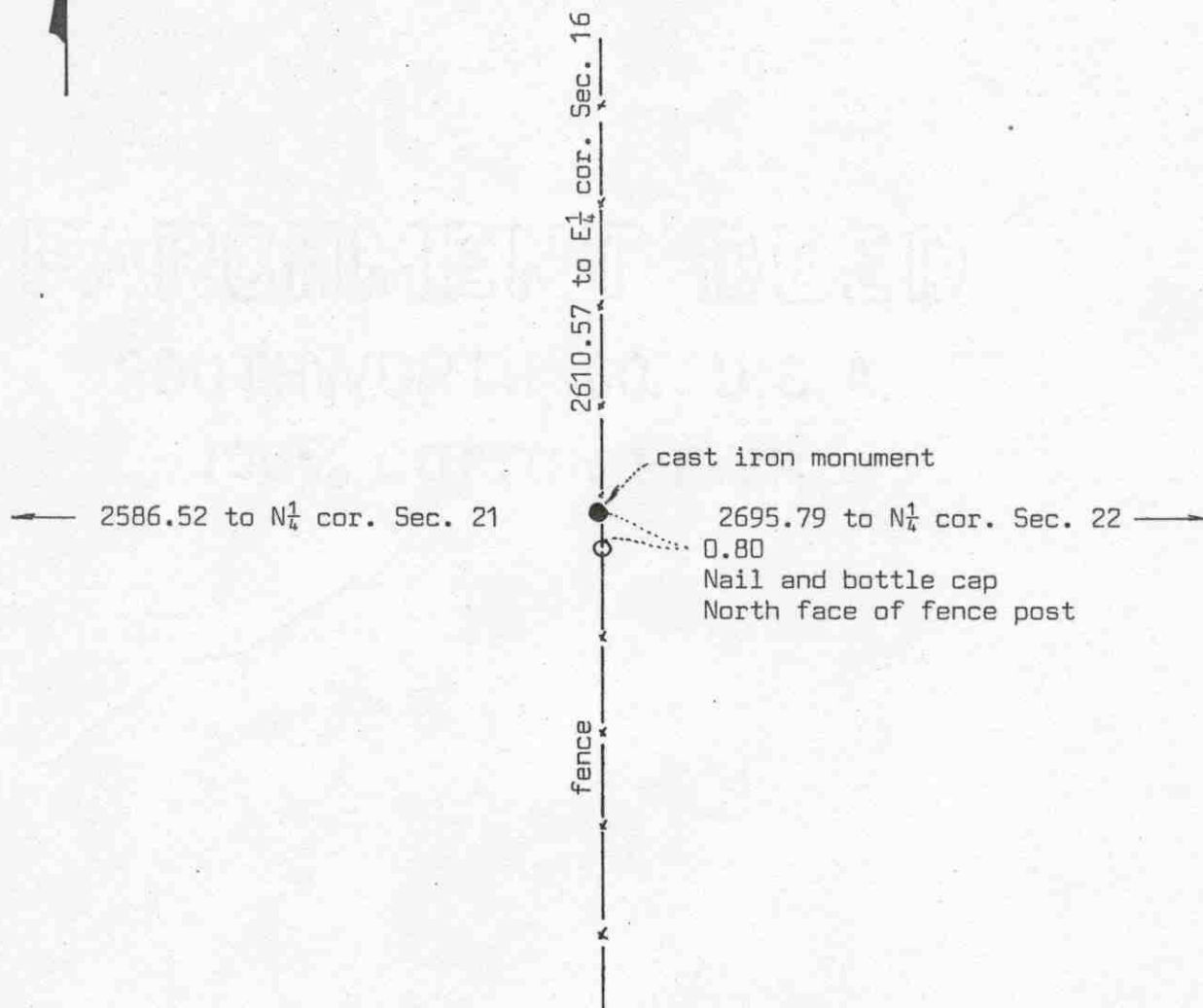
NORTHEAST corner, Section 21, Township 117 North, Range 30 West

# Certificate of Location of Government Corner



## SKETCH OF REFERENCE TIES

(NO SCALE)



Statement of evidence relative to this corner location on sheet 2

I hereby certify that this document was prepared by me or under my direct supervision.

Willard Pellinen

Willard Pellinen  
McLeod County Surveyor  
License No. 9626

Date 7/16/89

OFFICE OF THE COUNTY RECORDER  
MCLEOD COUNTY, MINNESOTA.

I hereby certify that this document was filed in this office at 9 o'clock A.M. on the 18th day of July, 19 89.

Carmen Cottler, County Recorder

By \_\_\_\_\_, Deputy

Document No. 229062

NORTHEAST        corner, Section 21, Township 117 North, Range 30 West

## Certificate of Location of Government Corner

This corner was originally set by D.L.Langton of the General Land Office in 1856. He set a post and had reference ties to 4 bearing trees.

1919. E.L.Higgins found a stone and iron pin at this corner.

1925 survey by E.L.Higgins shows a 1 foot by 1 foot gray granite stone at the corner.

On April 28, 1982, we found a gray granite stone on fence running north-south. Our distance to the East Quarter corner of Section 16 is within  $1\frac{1}{2}$  feet of 1925 distance by Higgins. Our distance to the north quarter corner of Section 22 is within  $1\frac{1}{2}$  feet of 1925 distance by Higgins.

On May 20, 1982, we set a McLeod County cast iron monument in place of the stone and buried the stone by the monument.

On February 21, 1989, we found the cast iron monument in good condition.

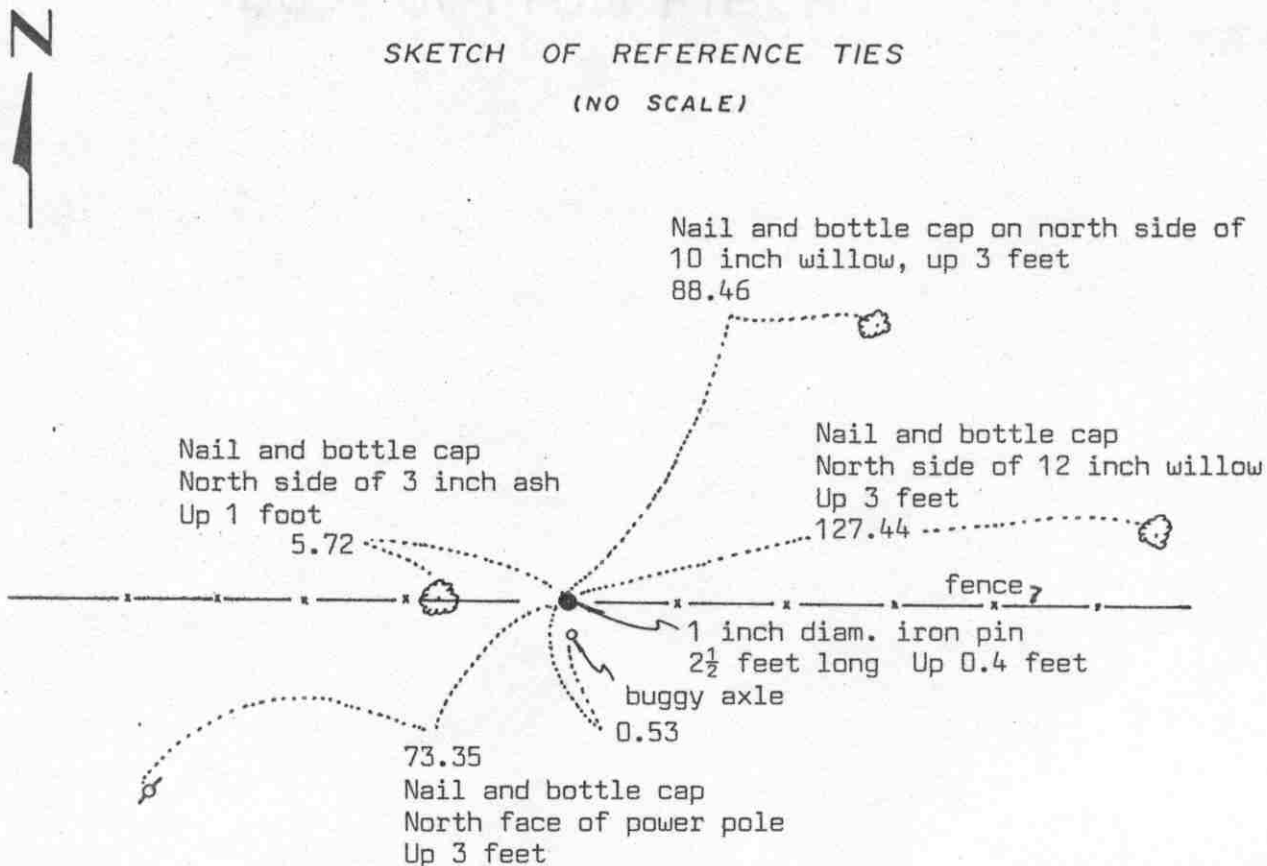
We believe the granite stone we found was the same stone shown in the 1925 survey and that it has perpetuated the correct location of the section corner

NORTH QUARTER corner, Section 21, Township 117 North, Range 30 West

# Certificate of Location of Government Corner

## SKETCH OF REFERENCE TIES

(NO SCALE)



Statement of evidence relative to this corner location on sheet 2

I hereby certify that this document was prepared by me or under my direct supervision.

Willard Pellinen

Willard Pellinen  
McLeod County Surveyor  
License No. 9626

Date 5/13/89

OFFICE OF THE COUNTY RECORDER  
MCLEOD COUNTY, MINNESOTA.

I hereby certify that this document was filed in this office at 9 o'clock A.M. on the 19th day of May, 1989.

Carmin Ostlie, County Recorder

By \_\_\_\_\_, Deputy

Document No. 228252

NORTH QUARTER corner, Section 21, Township 117 North, Range 30 West

## Certificate of Location of Government Corner

This corner was originally established by the government in 1856. D.L.Langton set this corner, also as the meander corner west of a lake. He set a post with reference ties to 2 bearing trees.

1919 survey notes by E.L.Higgins, survey in the Southeast Quarter of Section 16, show he set this corner under an east-west fence half way between the section corners, approximately on a straight line between the section corners.

August 25, 1982. We found a 1 inch diameter iron pin under an old barb wire fence and a buggy axle 5 feet long, up 3 feet, 0.53 feet south of the iron pin. This iron pin is 3.10 feet west of being half way between the section corners and 1.30 feet south of a straight line. We left the iron pin and buggy axle in place and took reference ties.

On February 14, 1989, we found the iron pin and the reference ties good.

We feel the iron pin was set in 1919 by Higgins and has perpetuated the correct location of the quarter corner.



EAST QUARTER corner, Section 22, Township 117 North, Range 30 West

## Certificate of Location of Government Corner



## SKETCH OF REFERENCE TIES

(NO SCALE)

fence

Steel fence post

0.4

cast iron monument

2

Nail and disc

West side of 12 inch tree

105.35

43.86

Nail and disc

west side of 12 inch stump

fence

 $\frac{1}{2}$  inch diam. iron pipes  
on section line.200.00 feet and 400.00 feet  
south of quarter cornerStatement of evidence relative to this corner location on sheet 2

I hereby certify that this document  
was prepared by me or under my  
direct supervision.

Willard Pellinen

Willard Pellinen  
McLeod County Surveyor  
License No. 9626

Date 7/22/89

OFFICE OF THE COUNTY RECORDER  
MCLEOD COUNTY, MINNESOTA.

I hereby certify that this document was filed in this  
office at 2 o'clock P.M. on the 27th day  
of July, 19 89.

Carmen Ostlie, County Recorder

By \_\_\_\_\_, Deputy

Document No. 229187



EAST QUARTER corner, Section 22, Township 117 North, Range 30 West

## *Certificate of Location of Government Corner*

This corner was set in 1856 by D.L.Langton of the Government Land Office. He "set quarter section post, drove charred stake, raised mound of earth and planted osage orange seeds at the corners of the trench as per instructions."

November, 1925. E.L.Higgins set a 2 inch diameter iron pipe on line and half way between the section corners.

On October 31, 1974, we found a 2 inch diameter iron pipe at the corner. We have a distance of 2638.74 feet to the southeast corner and a distance of 2639.07 to the northeast corner of section 22, compared with 2639 to each corner by Higgins. The found iron pipe was within a few hundredths of foot of being on a straight line between section corners.

On November 15, 1974, we set a McLeod County cast iron monument in place of the iron pipe and took reference ties.

February 23, 1989. We found the cast iron monument in good condition and the reference ties good.

We feel the iron pipe we found was the same pipe set by E.L.Higgins in 1925 and has perpetuated the true quarter corner.

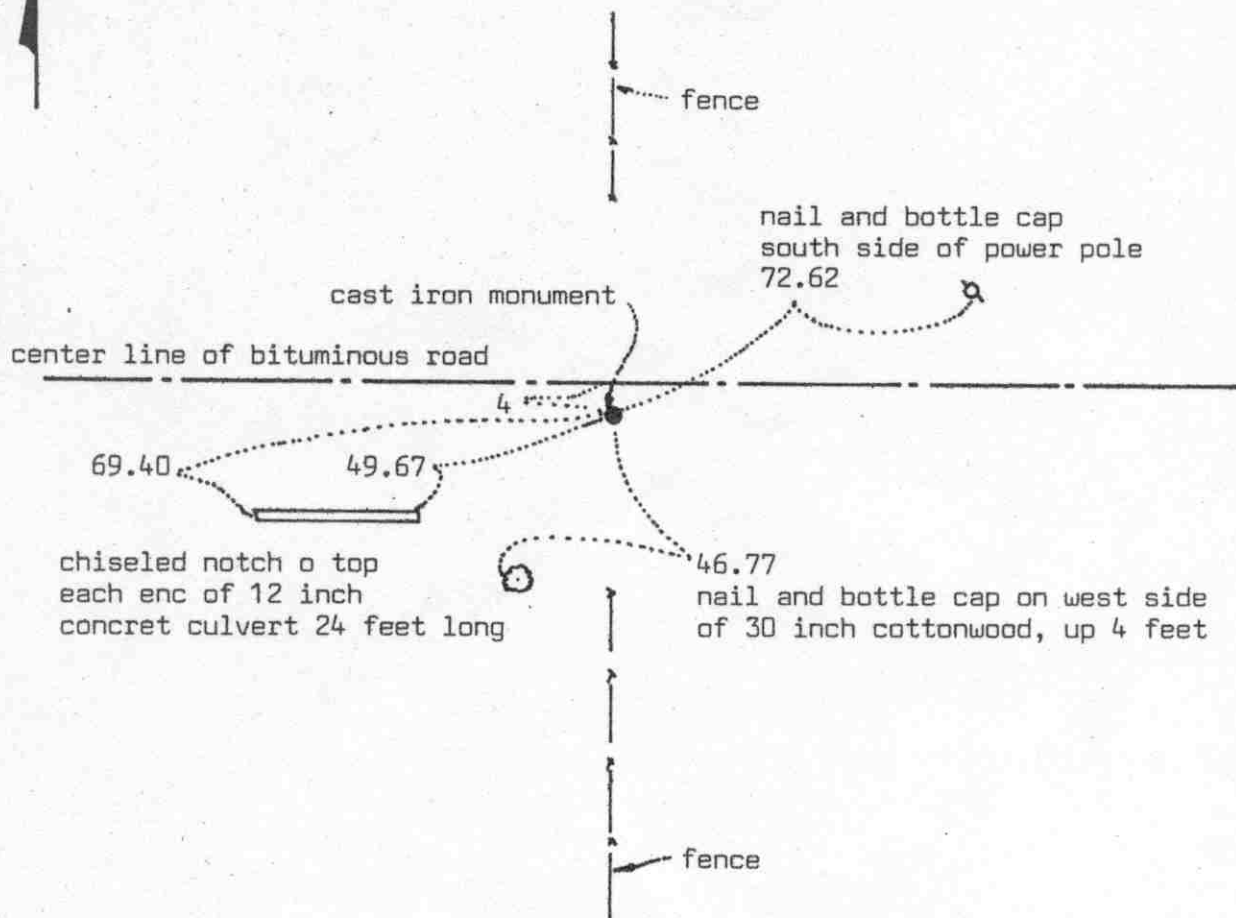
NORTHEAST corner, Section 22, Township 117 North, Range 30 West

# Certificate of Location of Government Corner



## SKETCH OF REFERENCE TIES

(NO SCALE)



Statement of evidence relative to this corner location on sheet 2

I hereby certify that this document was prepared by me or under my direct supervision.

Willard Pellinen

Willard Pellinen  
McLeod County Surveyor  
License No. 9626

Date 3/4/89

OFFICE OF THE COUNTY RECORDER  
MCLEOD COUNTY, MINNESOTA.

I hereby certify that this document was filed in this office at 9 o'clock A.M. on the 16th day of March, 1989.

Carmen Ostlie, County Recorder

By \_\_\_\_\_, Deputy

Document No. 227290

NORTHEAST corner, Section 22, Township 117 North, Range 30 West

## Certificate of Location of Government Corner

This corner was established in 1856 by D.L.Langton of the Government Land Office. He set a post with reference ties to 4 bearing trees.

1919 survey by E.L.Higgins shows a distance of 2705 feet to the north quarter corner of Section 22.

1925 survey notes by Higgins show a brick at the corner and a distance of 2639 feet to the east quarter corner of Section 22.

1930 survey notes show a brick, stone and iron at the corner.

1931 survey notes show a steel corner at the corner.

On June 28, 1968, we found an iron pipe 2 feet below the road surface. We took reference ties and set an iron pipe at the surface.

In 1969, we dug for the corner and found a stove pipe filled with brick, with a steel pin beside the brick. This was down about 3 feet below the surface, directly below the iron pipe found in 1968.

Our measured distance to the north quarter corner is 2705.33 feet compared with 2705 feet in 1919. We measured 2639.07 feet to the east quarter corner compared with 2639 in 1925.

On September 5, 1973, we set a McLeod County cast iron monument at the corner and took new reference ties.

On June 14, 1988, we found the monument in good condition and we took new reference ties.

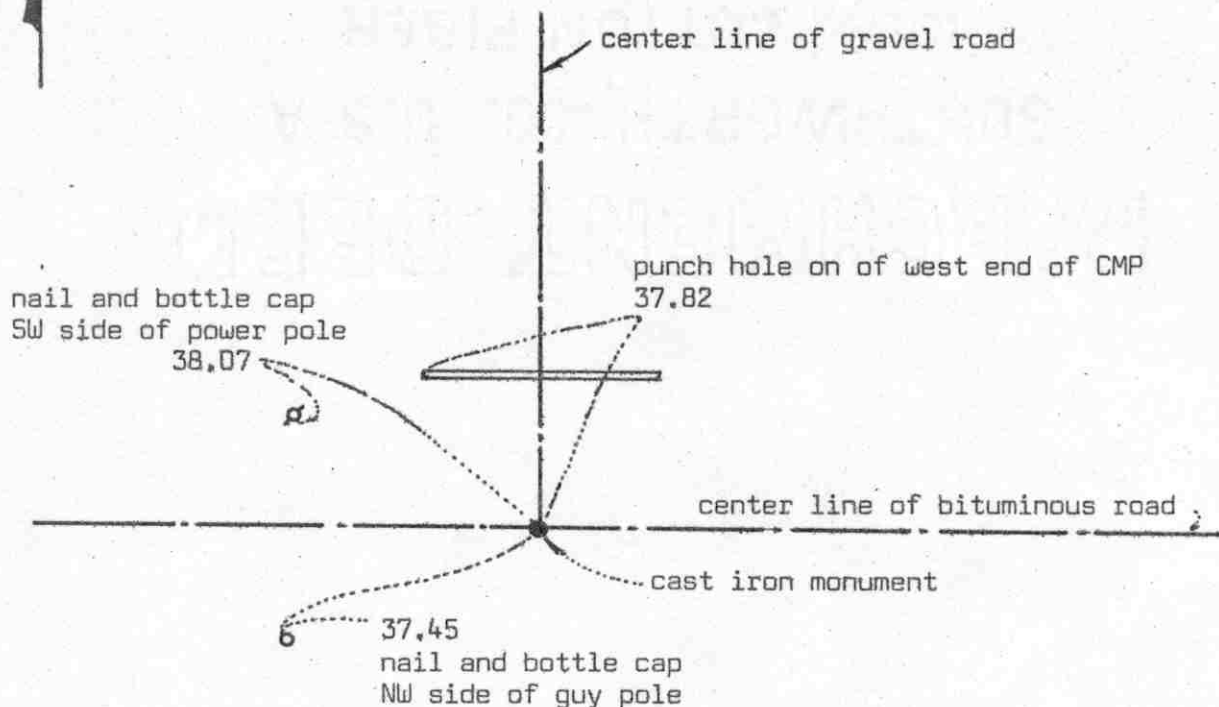
The location of the northeast corner of Section 22 has been perpetuated by the iron pipe, brick and the steel pin.

# Certificate of Location of Government Corner



## SKETCH OF REFERENCE TIES

(NO SCALE)



Statement of evidence relative to this corner location on sheet 2

I hereby certify that this document was prepared by me or under my direct supervision.

Willard Pellinen

Willard Pellinen  
McLeod County Surveyor  
License No. 9626

Date 3/19/89

OFFICE OF THE COUNTY RECORDER  
MCLEOD COUNTY, MINNESOTA.

I hereby certify that this document was filed in this office at 2 o'clock P.M. on the 30th day of March 19 89.

Carmen Cottler, County Recorder

By \_\_\_\_\_, Deputy

Document No. 227482

NORTH QUARTER corner, Section 22, Township 117 North, Range 30 West

## Certificate of Location of Government Corner

This corner was originally set by D.L.Langton of the Government Land Office in 1856. He set a post and had reference ties to 2 bearing trees.

1919 survey notes by E.L.Higgins show a distance of 2705 feet to the northeast corner of Section 22 and a distance of 2697 feet to the northwest corner.

1930 survey by Higgins shows he set an I.P. at the corner.

1931 survey by Higgins shows a steel corner on the center line of the east-west road.

On June 12, 1973, we found a 1 inch diameter steel pin down  $1\frac{1}{2}$  feet below the surface of the bituminous road. We took reference ties and set a  $\frac{1}{2}$  inch diameter iron pipe over the steel pin at the surface.

On September 15, 1973, we replaced the iron pipe with a McLeod County cast iron monument.

On June 14, 1988, we found the cast iron monument in good condition and the reference ties still good.

Our measured distance to the northwest corner of Section 22 is 2705.33 and to the northwest corner 2695.79 feet.

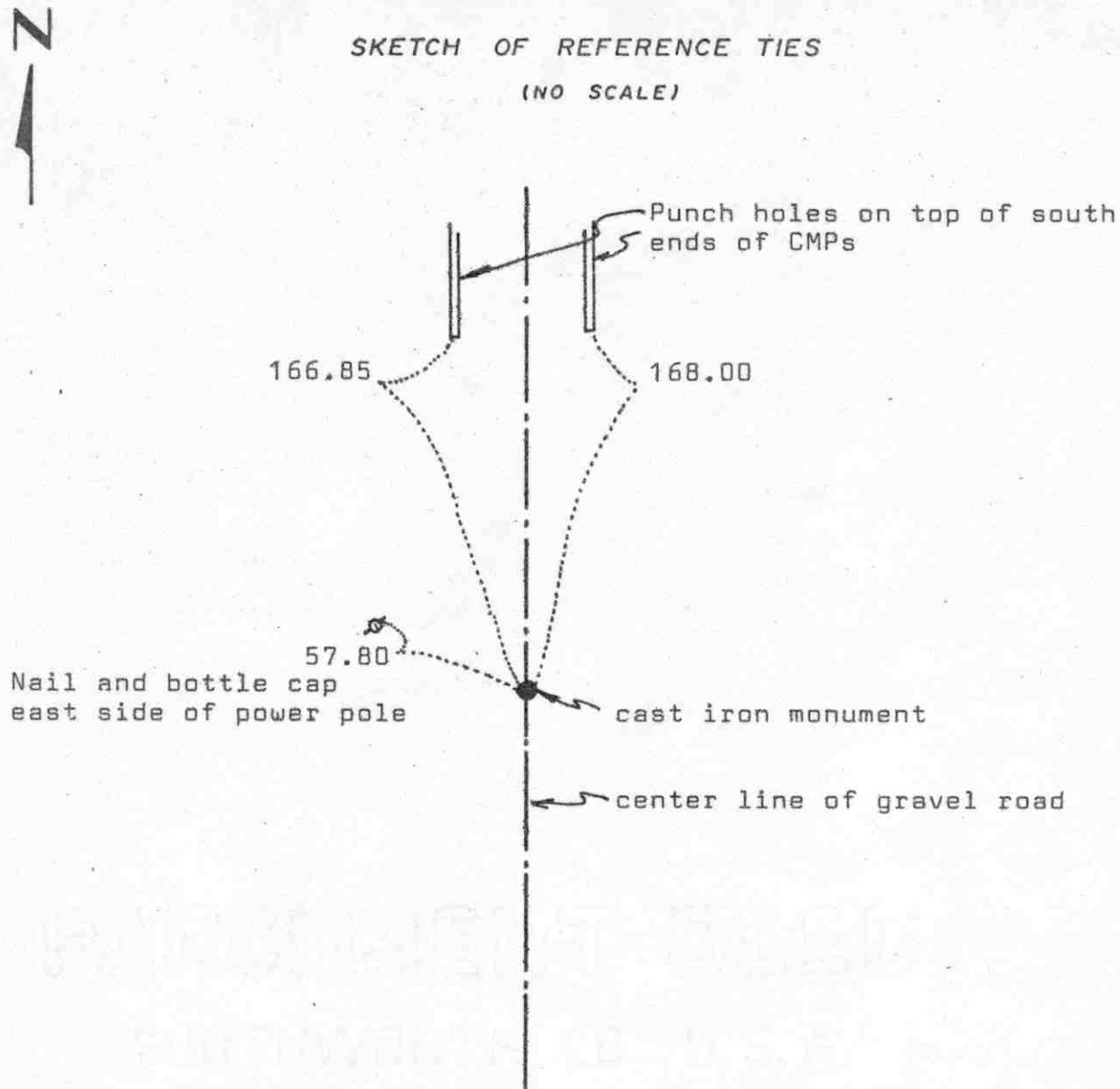
We feel the steel pin we found was the same pin shown on the 1931 survey by E.L.Higgins, and has perpetuated the correct north quarter corner of Section 22.

EAST QUARTER corner, Section 23, Township 117 North, Range 30 West

## Certificate of Location of Government Corner

## SKETCH OF REFERENCE TIES

(NO SCALE)

Statement of evidence relative to this corner location on sheet 2

I hereby certify that this document was prepared by me or under my direct supervision.

Willard Pellinen

Willard Pellinen  
McLeod County Surveyor  
License No. 9626

Date 3/21/89

OFFICE OF THE COUNTY RECORDER  
MCLEOD COUNTY, MINNESOTA.

I hereby certify that this document was filed in this office at 2 o'clock P.M. on the 30th day of March, 19 89.

Carmen Ostlie, County Recorder  
By \_\_\_\_\_, Deputy

Document No. 227483

EAST QUARTER corner, Section 23, Township 117 North, Range 30 West

## Certificate of Location of Government Corner

This corner was originally set by D. L. Langton of the Government Land Office in 1856. He "set quarter section post, drove charred stake, raised mound of earth and planted locust seeds at corners of trench as per instructions.

1929 survey notes by E.L.Higgins shows he set this corner midway between the section corners.

In 1969, McCombs Knutson Associates set an iron pipe midway and on line between the section corners. This fell on the center line of the road.

On November, 1973, we set a McLeod County cast iron monument in place of the iron pipe, and took reference ties.

In 1974, we dug for the corner, found nothing, and reset the cast iron monument in place.

On June 27, 1988, we found the cast iron monument in good condition and took new reference ties.

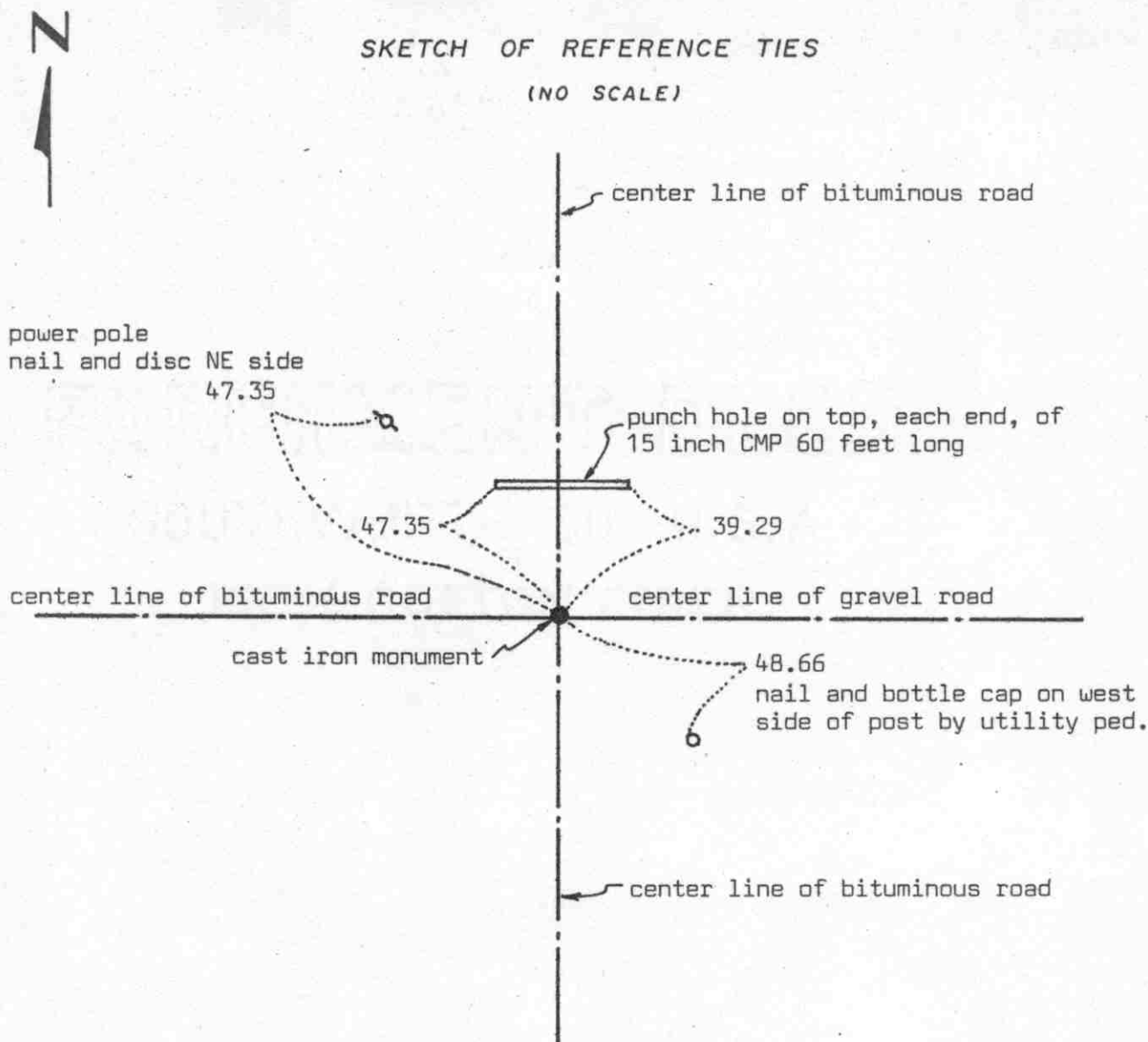
Our distance to each section corner is 2637.21 compared with 1929 distance by E.L.Higgins of 2638 feet.



NORTHEAST corner, Section 23, Township 117 North, Range 30 West

# Certificate of Location of Government Corner

## SKETCH OF REFERENCE TIES (NO SCALE)



Statement of evidence relative to this corner location on sheet 2

I hereby certify that this document was prepared by me or under my direct supervision.

Willard Pellinen

Willard Pellinen  
McLeod County Surveyor  
License No. 9626

Date 2/12/89

OFFICE OF THE COUNTY RECORDER  
MCLEOD COUNTY, MINNESOTA.

I hereby certify that this document was filed in this office at 9 o'clock A.M. on the 15th day of Feb., 1989.

Carmen Potlie County Recorder  
By \_\_\_\_\_, Deputy

Document No. 226964



NORTHEAST corner, Section 23, Township 117 North, Range 30 West

## Certificate of Location of Government Corner

This corner was established by the government in 1856.

1898 survey in Section 13 by E.L.Higgins shows a stone at this corner in the center line - center line intersection of roads.

1925 survey by Higgins in Section 23 shows a distance to the east quarter corner of 2638 feet.

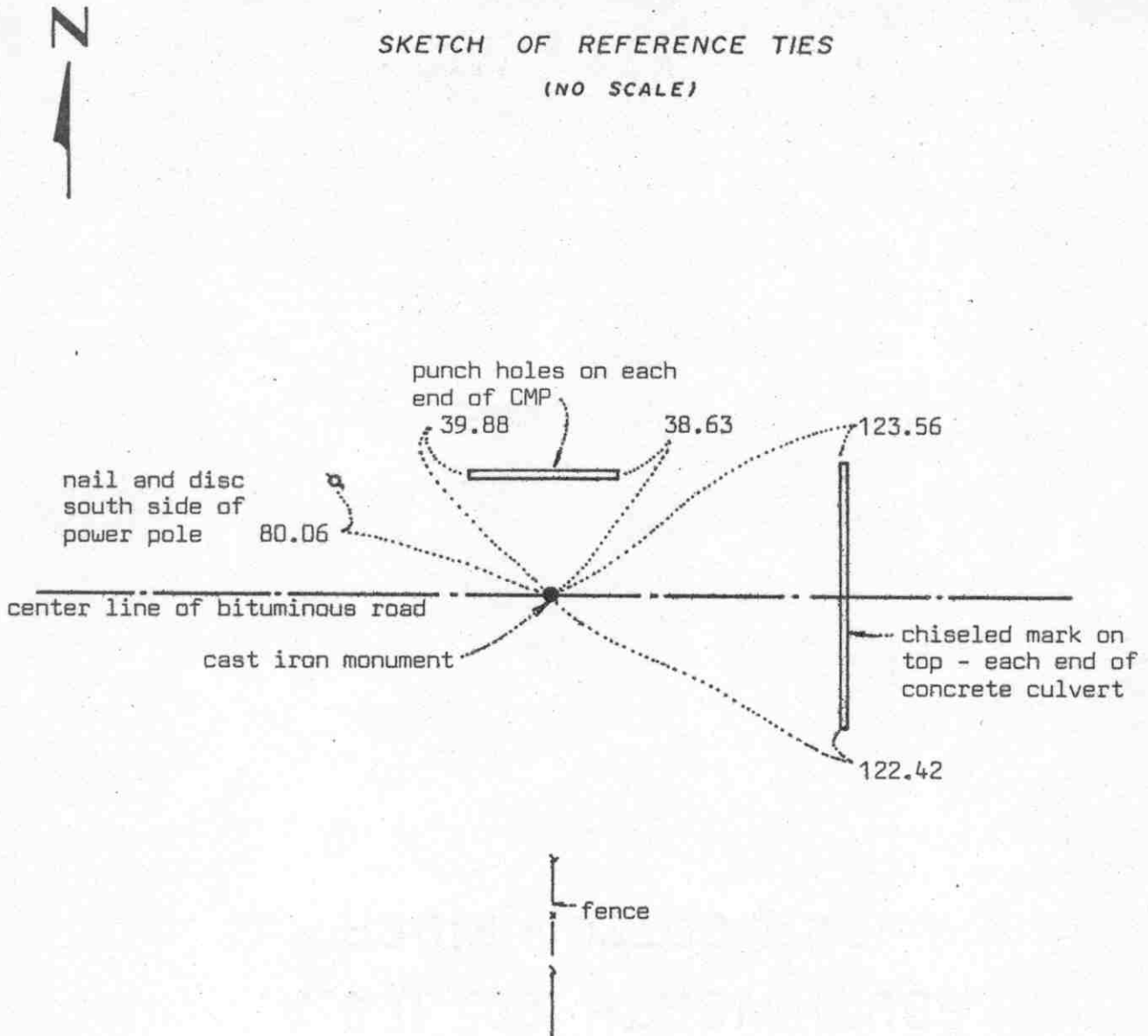
On August 31, 1973, we set a McLeod County cast iron monument in place of a 1/2 inch diameter iron rod which has been used by various surveyors as the correct corner. This iron rod was in the center line intersection of the roads and we measured 2637.21 feet to the east quarter corner of Section 23.

We accept the iron rod as having perpetuated the correct location of the northeast corner of Section 23.

NORTH QUARTER corner, Section 23, Township 117 North, Range 30 West

# Certificate of Location of Government Corner

SKETCH OF REFERENCE TIES  
(NO SCALE)



Statement of evidence relative to this corner location on sheet 2

I hereby certify that this document was prepared by me or under my direct supervision.

Willard Pellinen

Willard Pellinen  
McLeod County Surveyor  
License No. 9626

Date 3/20/89

OFFICE OF THE COUNTY RECORDER  
MCLEOD COUNTY, MINNESOTA.

I hereby certify that this document was filed in this office at 2 o'clock P.M. on the 30th day of March 19 89.

Carmen Ostlie, County Recorder

By \_\_\_\_\_, Deputy

Document No. 227484

NORTH QUARTER corner, Section 23, Township 117 North, Range 30 West

## *Certificate of Location of Government Corner*

This corner was established by D.L.Langton of the Government Land Office in 1856. He set a post in a mound of earth.

In 1966, Roy Hansen, surveyor, found an iron rod at this corner. He also used the iron as the correct corner in a 1967 survey.

In 1969, McCombs Knutson Associates also used the iron rod as the correct corner.

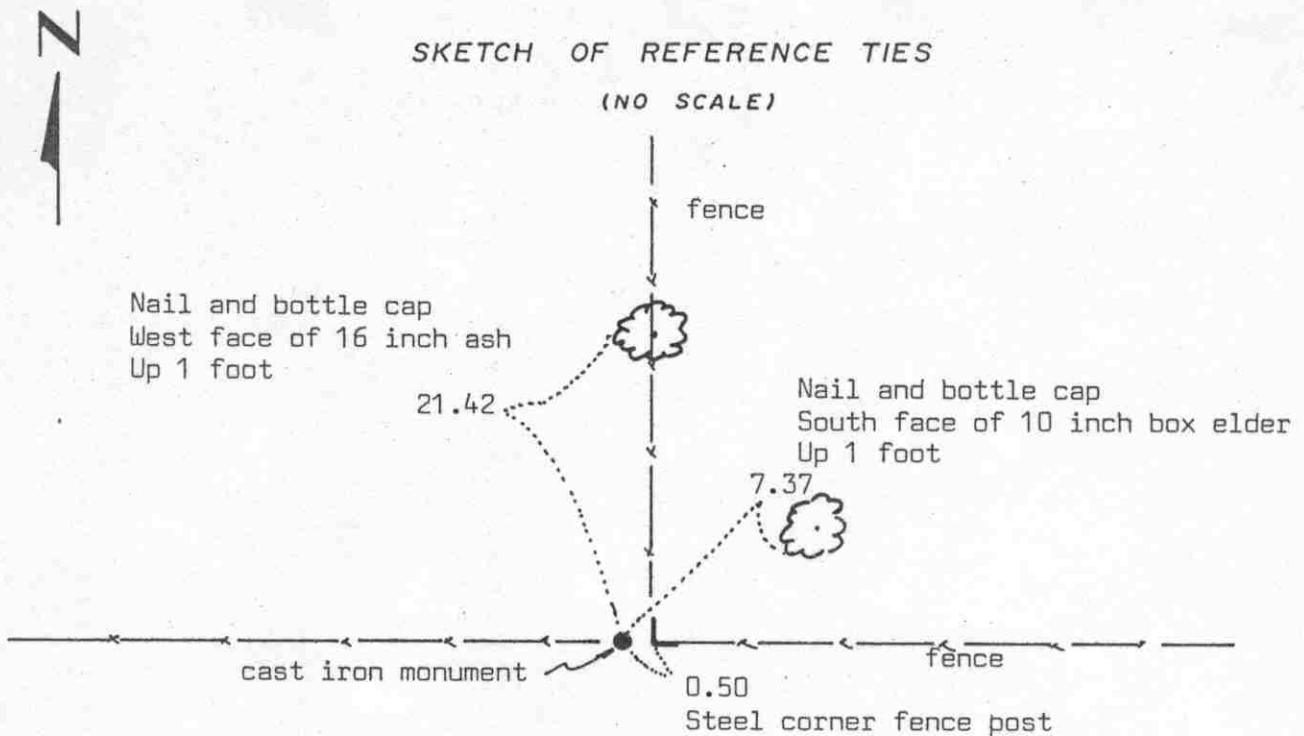
On August 31, 1973, we replaced the iron rod with a McLeod County cast iron monument.

On June 14, 1988, we found the cast iron monument in good condition and the reference ties still good.

We don't know who set the iron rod, but we will accept it as the correct corner. It fits the occupation lines, the center line of the road and it is in line with a fence to the south.

EAST QUARTER corner, Section 24, Township 117 North, Range 30 West

# Certificate of Location of Government Corner



Statement of evidence relative to this corner location on sheet 2

I hereby certify that this document was prepared by me or under my direct supervision.

Willard Pellinen

Willard Pellinen  
McLeod County Surveyor  
License No. 9626

Date 7/22/89

OFFICE OF THE COUNTY RECORDER  
MCLEOD COUNTY, MINNESOTA.

I hereby certify that this document was filed in this office at 2 o'clock P.M. on the 27th day of July, 19 89.

Carmen J. J. J., County Recorder  
By \_\_\_\_\_, Deputy

Document No. 229188

EAST QUARTER corner, Section 24, Township 117 North, Range 30 West

## *Certificate of Location of Government Corner*

This corner was originally established by the government in 1855. John Ryan set a post and had reference ties to 2 bearing trees.

1920 survey in Section 19, Township 117, Range 29, shows a  $2\frac{1}{2}$  inch by  $2\frac{1}{2}$  inch by 2 foot iron monument at the intersection of fences.

1921 survey notes by E.L.Higgins also shows an iron monument at the corner.

1929 survey notes by Higgins shows a monument in place and a distance of 2560 to the northeast corner of Section 24.

May 31, 1969. We measured the east line of Section 24 and found a  $2\frac{1}{2}$  inch by  $2\frac{1}{2}$  inch by 2 foot iron monument at the fence intersection. We had a distance of  $2560 \pm$  feet to the northeast corner of the section. We replaced the found iron monument with a McLeod County cast iron monument and took reference ties.

February 23, 1989. We found the monument in good condition and took new reference ties.

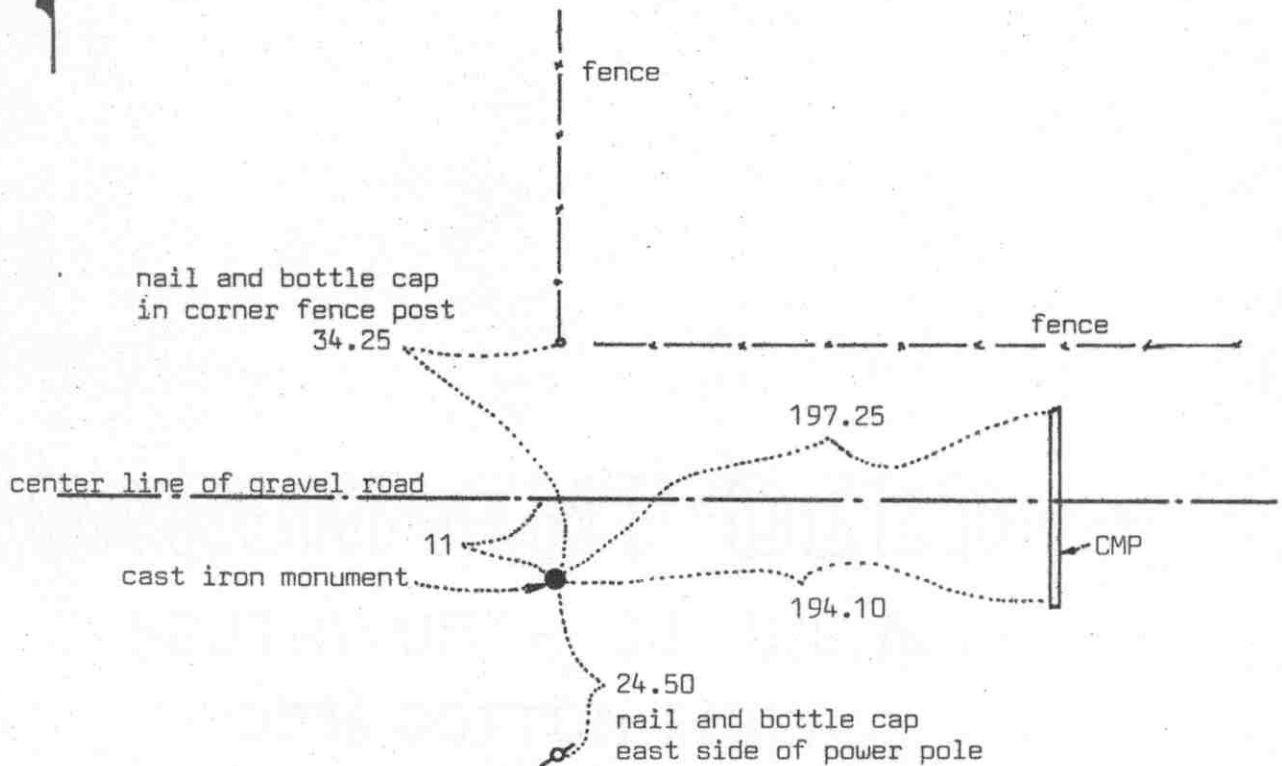
We believe the found iron monument and the fence intersection have perpetuated the correct location of the quarter corner.

NORTHEAST corner, Section 24, Township 117 North, Range 30 West

# Certificate of Location of Government Corner



## SKETCH OF REFERENCE TIES (NO SCALE)



Statement of evidence relative to this corner location on sheet 2

I hereby certify that this document was prepared by me or under my direct supervision.

Willard Pellinen  
Willard Pellinen  
McLeod County Surveyor  
License No. 9626

Date 3/11/89

OFFICE OF THE COUNTY RECORDER  
MCLEOD COUNTY, MINNESOTA.

I hereby certify that this document was filed in this office at 9 o'clock A.M. on the 16th day of March, 19 89.

Carmen Ostlie, County Recorder  
By \_\_\_\_\_, Deputy

Document No. 227291

NORTHEAST corner, Section 24, Township 117 North, Range 30 West

## Certificate of Location of Government Corner

This corner was not set by the government. Corner fell in lake.

1921 survey by E.L.Higgins shows a distance of 2560 feet to the east quarter corner of Section 24 and a distance of 2560 feet to the east quarter corner of Section 13.

In December, 1968, we measured the east line of Section 24 and Section 13 and set a temporary corner half way between the east quarter corners of Sections 24 and 13.

On May 31, 1969, we found a stone at approximately the location of our temporary corner. This stone was on the south shoulder of a gravel road. We replaced the stone with a McLeod County cast iron monument in 1971 and took reference ties.

Our measured distance to the east quarter corner of Section 24 is 2560.20 feet and to the east quarter of Section 13 is 2561.30, only 0.55 feet from a split between the corners. The corner is in line with a fence to the north.

We accept the location of the stone as the correct location of the northeast corner of Section 24. We don't know if E.L.Higgins set this stone, his notes don't show that he did. His notes show the corner in the lake. The stone falls so close to being on a split between the quarter corners and we feel the fence has perpetuated the range line between Ranges 29 and 30 and there being no evidence to the contrary we feel this is the correct corner.



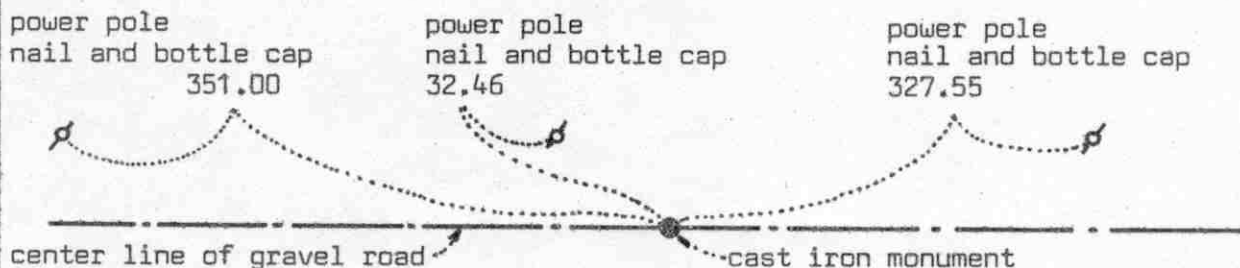
NORTH QUARTER corner, Section 24, Township 117 North, Range 30 West

# Certificate of Location of Government Corner



## SKETCH OF REFERENCE TIES

(NO SCALE)



Statement of evidence relative to this corner location on sheet 2

I hereby certify that this document was prepared by me or under my direct supervision.

Willard Pellinen

Willard Pellinen  
McLeod County Surveyor  
License No. 9626

Date 3/3/89

OFFICE OF THE COUNTY RECORDER  
MCLEOD COUNTY, MINNESOTA.

I hereby certify that this document was filed in this office at 9 o'clock A.M. on the 16th day of March, 1989.

Carmen Dettie, County Recorder

By \_\_\_\_\_, Deputy

Document No. 227292

NORTH QUARTER corner, Section 24, Township 117 North, Range 30 West

## *Certificate of Location of Government Corner*

This corner was set by D.L.Langton of the Government Land Office in 1856. He set a post and had reference ties to 2 bearing trees.

December, 1898. E.L.Higgins, in a survey in Section 13 shows this corner in his notes but doesn't show what he found.

In 1968, we set a temporary north quarter corner half way between the section corners on the center line of the road.

In 1970, we dug for the corner and down at 3 feet we found a stone with a wood stake beside it. We set an iron pipe.

On April 20, 1971 we replaced the iron pipe with a McLeod County cast iron monument and took reference ties.

This corner is within a few tenths of a foot of being half way between the section corners. Fence lines running north and south  $\frac{1}{4}$  mile east are 9 feet east of the 1/16 lines and fences running north and south  $\frac{1}{4}$  mile west are 4 feet east of the 1/16 lines.

On June 27, 1988, we found the monument in good shape and the reference ties o.k.

We feel the stone we found in 1970 had perpetuated the true location of the north quarter corner of Section 24.